

PRSRT STD
ECRWISS
U.S. POSTAGE
PAID
EDDM RETAIL

*****ECRWSSSEDDM*****

PO Box Holder
Hamel, IL 62046

Village of Hamel (618) 633-2484 www.villageofhamel.com

Village Of Hamel

IN THIS ISSUE

- ◆ Hamel Business District 2 Announcement

Cool Hamel Facts

In November of 1929, H. F. Langendorf hosted a duck and goose shoot in Hamel, which included "Blue Rock and Target shootin."



Open from 9-10:30 a.m. on Mondays, except for Holidays and days when schools are cancelled due to winter weather.

Bread of Life Food Pantry is sponsored by the Alhambra Hamel Ministerial Alliance (AHMA) and is supported by member congregations of the Alliance and a host of community groups and individuals.

Donations are always appreciated. You can drop off donations at DK's or any AHMA member location.

Hamel Business District 2 Announcement



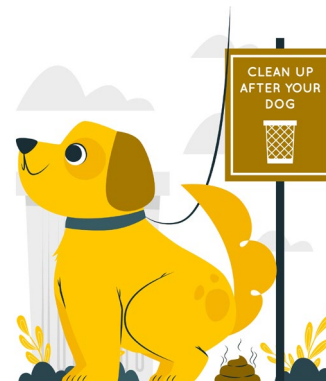
Beginning July 1st, Hamel Business District 2 will be extended to all businesses along IL State Route 140 that will be served by the new sidewalks to be installed. The sales tax on non-grocery and drug items will be increased by 1% in the district.

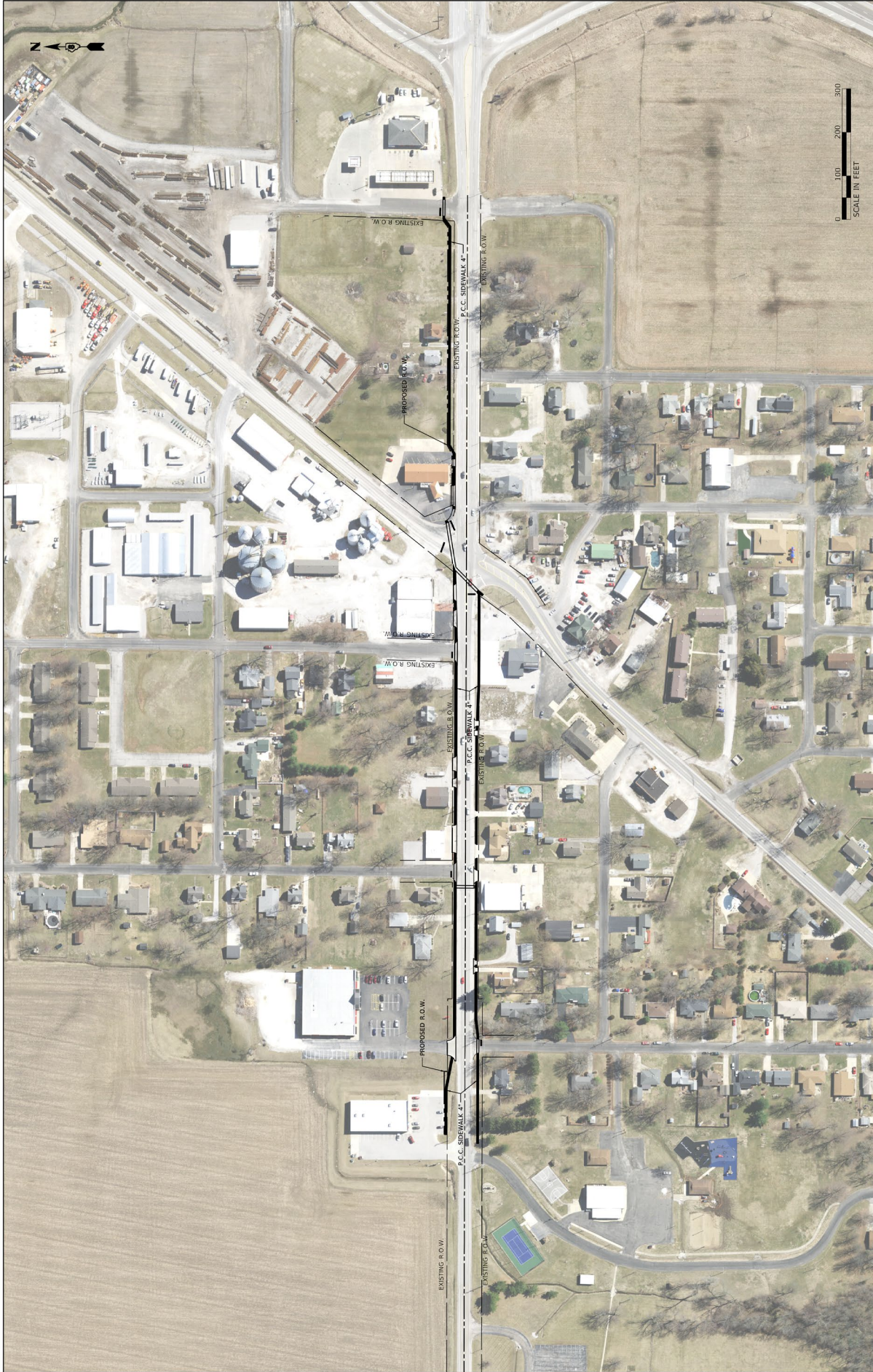
The sidewalk project will install ADA complaint sidewalks down IL Route 140 and include a pedestrian crosswalk for IL Rt 140. As the next part of the updates, Park Ave. will have pedestrian/bicycle upgrades after the IL Rt 140 sidewalk project is completed.

The total sales tax within the district will go from 6.6 to 7.6 cents per dollar. Those rates are less than surrounding communities included Edwardsville 7.35 cents sales tax 8.35 for business districts, Glen Carbon 7.1 cents sales tax 8.1 for business districts and Collinsville 8.25 cents sales tax 9.25 for business districts.

After considering multiple funding options for the project, the Village opted to increase the Business District to include all businesses in the improved area. The Village of Hamel does not currently levy a general property tax on residential or business properties in the Village, a common form of funding in almost every community in Illinois.

The sidewalk upgrades will help improve pedestrian safety, improve access to Hamel businesses and the Hamel Park and bring the area into better compliance with the *Americans With Disabilities Act*.





USER NAME - <i>csimilarity</i> DATE SCALE - 10/20/2022 / ft PLOT DATE - 10/20/2022	DESIGNED - DJR DRAWN - BLK CHECKED - DATE - 10/22	REVISION - REVISION - REVISION -	IL 140 SIDEWALK IMPROVEMENTS VILLAGE OF HAMEL	SCALE: 1"=100' SHEET 1 OF 1 SHEETS: STA. _____ TO STA. _____	PLAN EXHIBIT EXHIBIT C	SECTION _____ COUNTY ANDERSON CONTRACT NO. _____ LUNDS P&S PROJECT	TOTAL SHEETS _____ SHEETS NO. _____ CONTRACT NO. _____
--	--	--	--	--	--	---	--